



N-MID[®] Osteocalcin ELISA

Cleared by FDA

Bone Formation Marker For Clinical Trials and Patient Monitoring

Postmenopausal osteoporosis

- Monitor skeletal response to anti-resorptive therapies, e.g. HRT, bisphosphonates

Assessment of bone formation in patients

- With metabolic bone diseases, e.g. Paget's disease

The N-MID[®] Osteocalcin ELISA is used for quantitative assessment of bone formation in serum and plasma. The assay detects total osteocalcin (intact and N-MID fragment) released by osteoblasts to the circulation.

nordicbioscience
diagnostics

www.nbdiagnostics.com

N-MID[®] Osteocalcin
ELISA

CrossLaps[®] for Culture
ELISA

Urine CrossLaps[®]
ELISA

Rat-MID[™] Osteocalcin
ELISA

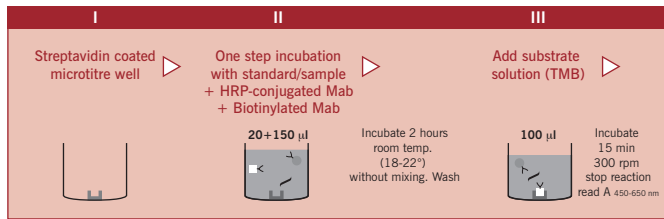
Serum CrossLaps[®]
ELISA

CartiLaps[®]
ELISA

RatLaps[™]
ELISA

N-MID® Osteocalcin ELISA

ENZYME IMMUNOASSAY FOR QUANTITATIVE ASSESSMENT OF BONE FORMATION



Performance Characteristics

Method:	• Sandwich ELISA
Format:	• 96-well microplate with reagents sufficient to test 40 samples in duplicate
Detection limit:	• 0,5 ng/mL
Analyte:	• Total osteocalcin (intact and N-MID fragment)
Specimen:	• Serum and plasma
Specimen volume:	• 20 μ l
Precision CV intraassay:	• < 4%
Precision CV interassay:	• < 7%
Species Reactivity:	• Human, bovine, dog, goat, pig
Shelf life:	• 18 months
Assay time:	• Approx. 3 hours

The N-MID® Osteocalcin ELISA kit is for *in vitro* only.

Product number #3OSC4000

Sampling

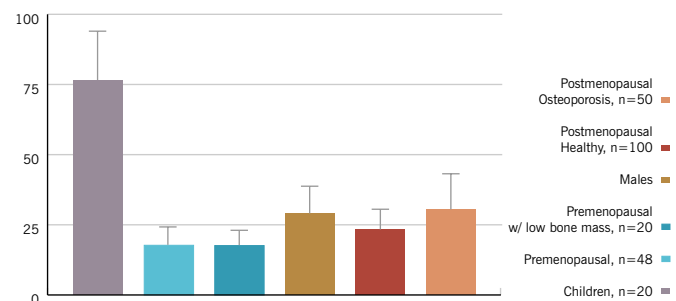
Collect blood samples and separate serum or plasma within 3 hours. For prolonged storage samples should be frozen (<-18°C).

Analyte Stability		
at	+ 4°C	few days
at	-20°C	> 3 years
at	-80°C	> 3 years

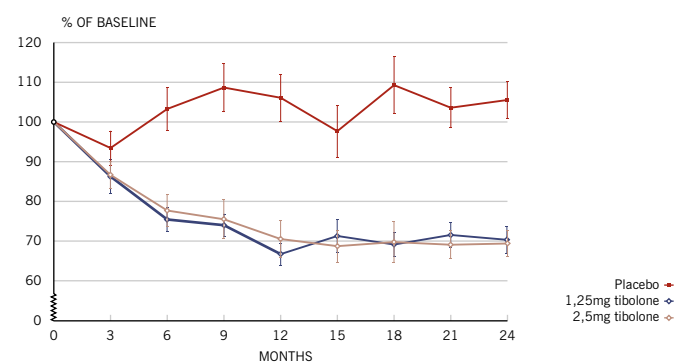
Assay Procedure

1. Prepare the **Antibody Solution**.
2. Pipette 20 μ L of either **Standards**, **Control**, or unknown samples into appropriate wells. Add 150 μ L of **Antibody Solution**. Cover the immunostrips with sealing tape and incubate for 120 \pm 5 minutes at room temperature (without any mixing).
3. Wash the immunostrips 5 times with **Washing Solution** diluted 1+50 in distilled water.
4. Pipette 100 μ L of the **Substrate Solution** incubate for 15 \pm 2 minutes in the dark (without any mixing). Use sealing tape.
5. Add 100 μ L of **Stopping Solution** to all wells.
6. Measure the absorbance at 450 nm with 650 nm as reference within two hours.

N-MID® Osteocalcin normal ranges



Therapeutic response to anti-resorptive therapy in postmenopausal women



LITERATURE: 1. CHRISTIANSEN ET AL. OSTEOPOROSIS INT (2003). 2. TANKÓ ET AL. BONE 32:687-693 (2003). 3. TANKÓ ET AL. J BONE MINER RES 19:1531-1538 (2004). 4. WARMING ET AL. MENOPAUSE 11:337-342 (2004). 5. WARMING ET AL. MATURITAS 50:78-85 (2005).

all the way

FROM RESEARCH TO PATIENT MONITORING

Nordic Bioscience Diagnostics A/S • Herlev Hovedgade 207 • 2730 Herlev • Denmark • www.nbdiagnostics.com